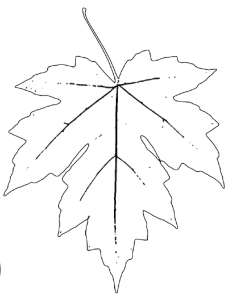


# Host Trees



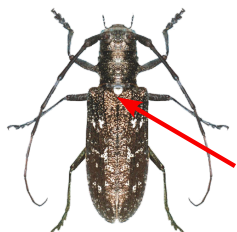
## Preferred Hosts:

- Maple (*Acer*)
- Birch (*Betula*)
- Willow (*Salix*)
- Elm (*Ulmus*)
- Horsechestnut (*Aesculus*)

## Other Hosts:

- Plane-tree (*Platanus*)
- Poplar (*Populus*)
- Ash (*Fraxinus*)
- Silk tree (*Albizia*)
- Hackberry (*Celtis*)
- Mountain-ash (*Sorbus*)
- Katsura (*Cercidiphyllum*)

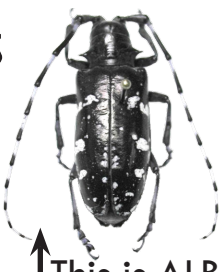
# Similar Species



White-spotted Sawyer  
(*Monochamus scutellatus*)



Northeastern Sawyer  
(*Monochamus notatus*)



↑ This is ALB!

Note white spot  
between wing covers



Eyed Click Beetle  
(*Alaus oculatus*)

Think you've seen an Asian Longhorned Beetle or signs of ALB tree damage?

Go to [www.mass.gov/agr](http://www.mass.gov/agr) or call 1-866-702-9938.

Print your own copies of this guide at:  
<http://bit.ly/albpocketmod>



# The MDAR Pocket Guide to



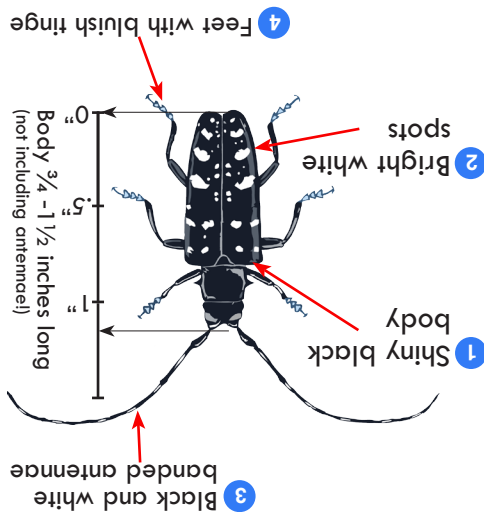
# The Asian Longhorned Beetle

## Save the Trees - Stop the Asian Longhorned Beetle!

Asian Longhorned Beetle (*Anoplophora glabripennis* or "ALB") is a serious threat to hardwood trees including maple, birch, willow and elm. ALB kills trees by tunneling through the wood. Once a tree is infested, it must be destroyed.

Massachusetts forests and wildlife, as well as maple syrup and timber producers, the nursery industry, and fall foliage tourism would all be severely impacted if ALB becomes established in Massachusetts.

Adult beetles begin to emerge from trees in July, and are active until frost



## Asian Longhorned Beetle ID:

ALB makes perfectly round exit holes, about 3/8" wide



Female beetles chew egg laying sites in the bark of the tree, these pits are about 1/2" wide. Each pit contains a single small egg.



## Folding Instructions

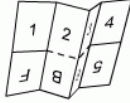
Note: All folds should be to the lines printed on the paper, and not to the actual edges of the page.

PocketMod.com

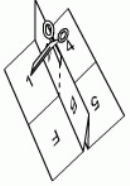
© 2005-2006

1	2	3	4
L	B	9	G

1. Start with front page at top left.

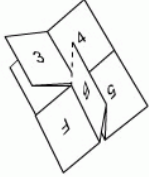


2. Fold in halves

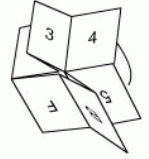


3. Cut at dotted line in center

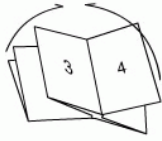
4. Fold to opposite ends.



5. Fold in half vertically



6. Fold in half horizontally



done, enjoy!

