

Site Redevelopment Plans

for

30-32 Wall Street

FOXBOROUGH, MA 02035

OWNER/APPLICANT:
TNC DEVELOPMENT LLC
 58 WILLOW STREET
 NORWOOD, MA 02062

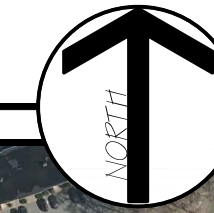
CIVIL ENGINEER:
Hazem Dani, PE
HD DESIGN
 161 W. HIGH ST.
 AVON, MA 02322

ARCHITECT:
Big Red Barn, Design

LEGAL COUNSEL:
Michael Khoury, Esq.
MADOFF & KHOURY LLP
 124 WASHINGTON STREET,
 SUITE 202
 FOXBOROUGH, MA 02035

LOCUS MAP

SCALE: 1" = 200'



DRAWING INDEX

Sheet Number	Sheet Title
C-001	TITLE SHEET
C-100	DEMOLITION & EROSION CONTROL PLAN
C-200	SITE LAYOUT & UTILITIES PLAN
C-201	GRADING & DRAINAGE PLAN
C-300	VEHICLE TURING MOVEMENT PLAN
C-601	DETAILS-1
C-602	DETAILS-2
-	EXISTING CONDITIONS PLAN (BY ZLS LLC)
-	ARCHITECTURAL PLANS (BY BIG RED BARN DESIGN)

HD Design
 161 W. High Street,
 Avon, MA 02322
 Cell: (508) 840-1045
 Email: hazem.dani87@gmail.com



No.	Submittal / Revision	Appr'd By	Date
0	SITE PLAN REVIEW - APP	HD	09/18/23
1	RESPONSE TO COMMENTS	HD	03/14/24

TNC DEVELOPMENT LLC
 58 WILLOW STREET
 NORWOOD, MA 02062

SITE PLANS
BUILDING EXPANSION
MIXED-USE BUILDING
 30-32 WALL STREET, FOXBOROUGH, MA

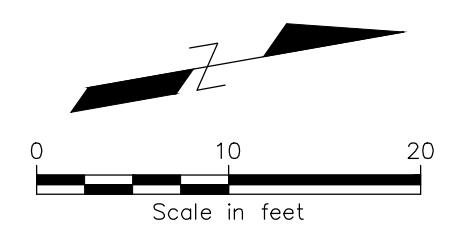
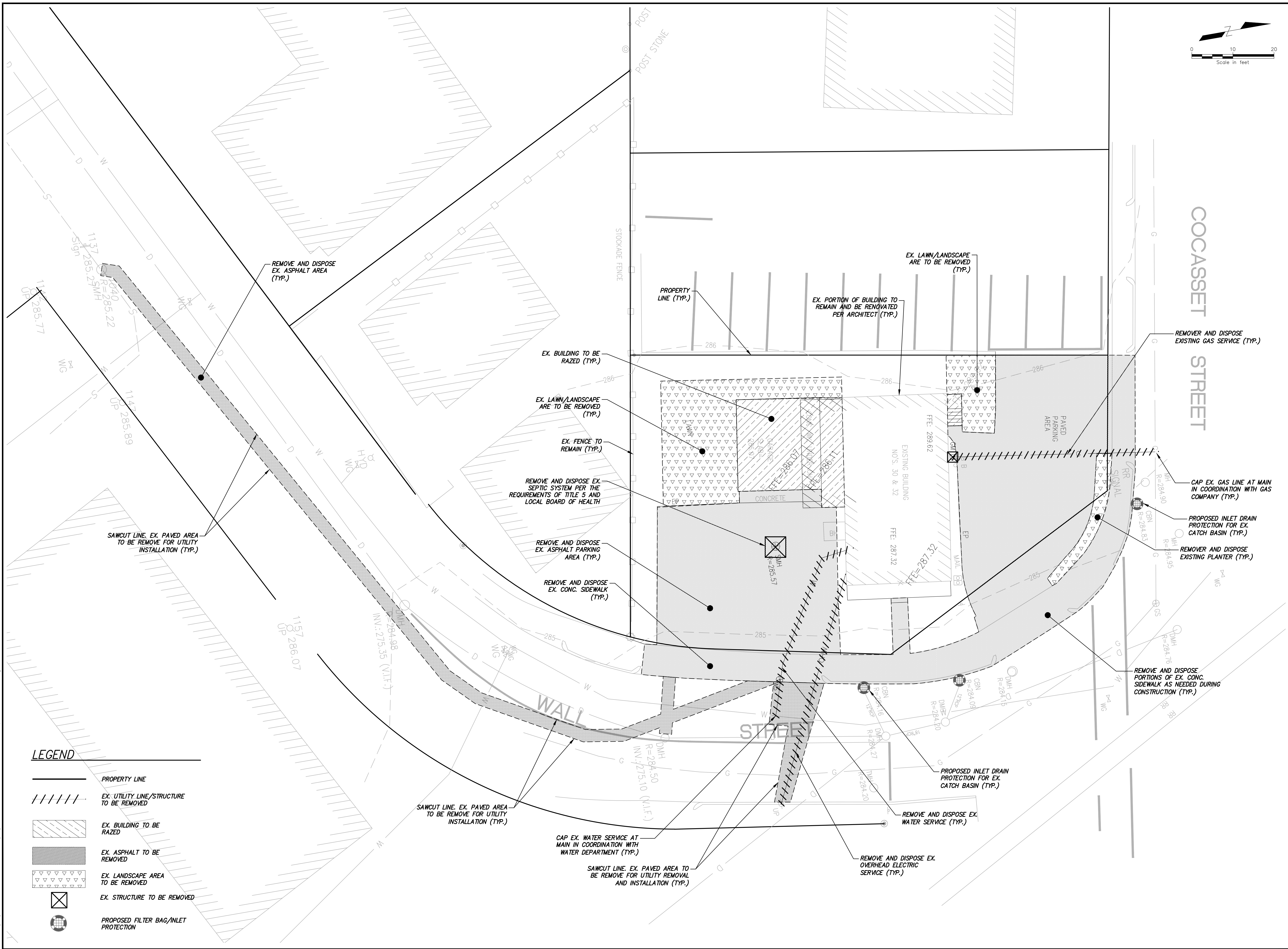
TITLE SHEET

Designed By: HD	Drawn By: HD	Checked By: -
Issue Date: 09/18/2023	Project No: 12022	Scale: AS SHOWN

Drawing No:
C-001

File: V:\OH_DATA\OFFICES\NMA78\QVIL\VID\FOXBORO\SHEET FILES\C-001 TITLE SHEET.DWG
 Saved: 3/10/2024 7:53:01 PM. Printed: 3/13/2024 11:33:42 PM. Current User: Dani, Hazem. Last Saved By: 5400

File: V:\04-DATA\OFFICES\MM78\04\WILLOW\DEMOLITION\01-SHEET FILES\C-100-DEM PLAN.DWG
 Saved: 3/10/2024 7:53:10 PM Plotter: 7/13/2024 11:30:52 PM Current User: Dani, Hazem, LastSavedBy: 5400



HD Design
 161 W. High Street,
 Avon, MA 02322
 Cell: (508) 840-1045
 Email: hazem.dani87@gmail.com



No.	Submit / Revision	Appr. By	Date
0	SITE PLAN REVIEW - APP	HD	09/18/23
1	RESPONSE TO COMMENTS	HD	03/10/24

TNC DEVELOPMENT LLC
 APPLICANT / OWNER
58 WILLOW STREET
NORWOOD, MA 02062

SITE PLANS
BUILDING EXPANSION
MIXED-USE BUILDING
 30-32 WALL STREET, FOXBOROUGH, MA

SITE DEMOLITION PLAN

Designed By: HD	Drawn By: HD	Checked By: -
Issue Date: 09/18/2023	Project No: 12022	Scale: 1"=10'

Drawing No:
C-001



Date	09/18/23
Appr. By	HD
Submittal/Revision	HD
0 SITE PLAN REVIEW - APP	HD
1 RESPONSE TO COMMENTS	HD

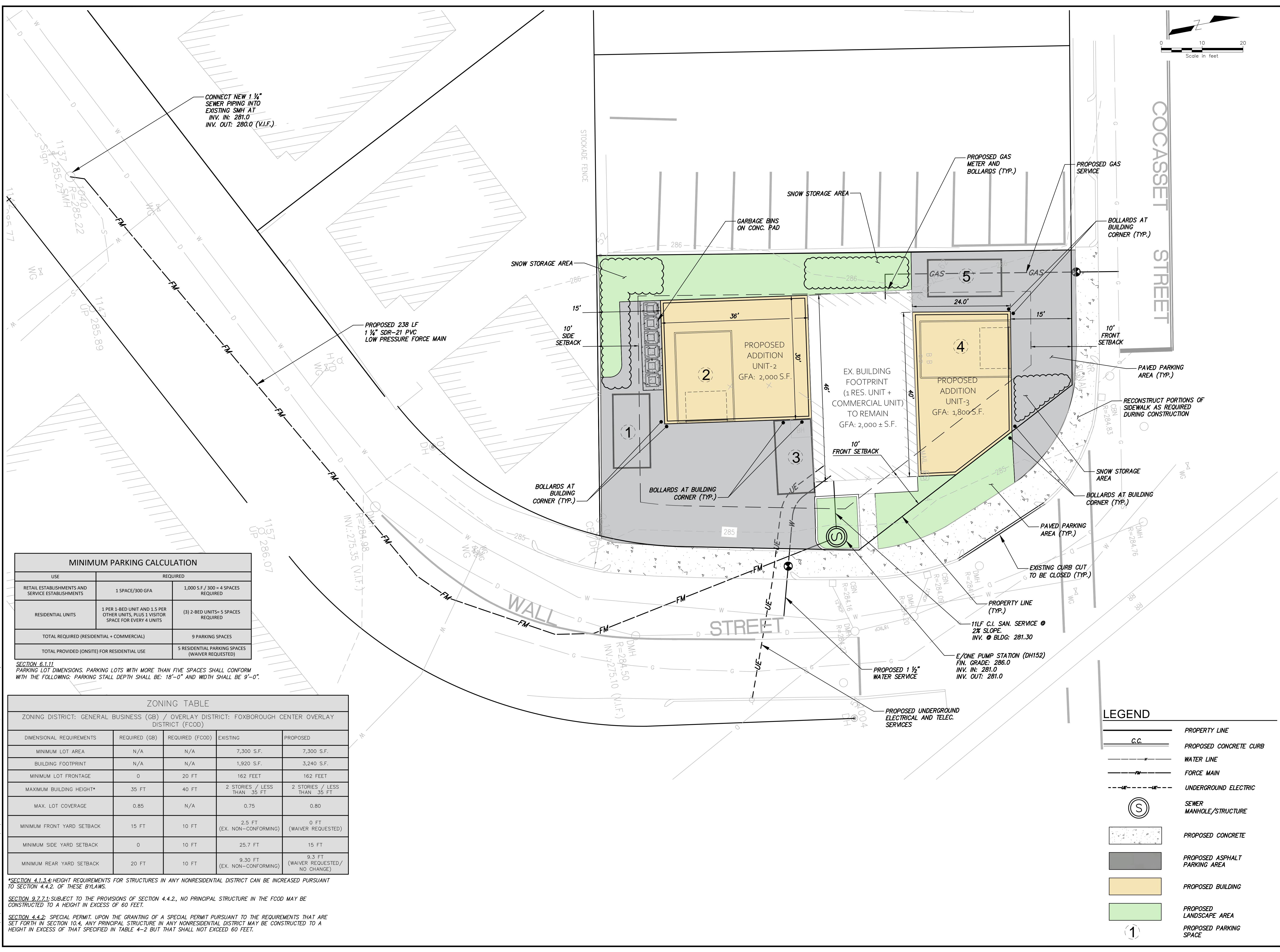
TNC DEVELOPMENT LLC
58 WILLOW STREET
NORWOOD, MA 02062

SITE PLANS
BUILDING EXPANSION
MIXED-USE BUILDING
 30-32 WALL STREET, FOXBOROUGH, MA

SITE LAYOUT AND UTILITIES PLAN

Designed By:	Drawn By:	Checked By:
HD	HD	
Issue Date:	Project No:	Scale:
09/18/2023	12022	1"=10'

Drawing No:
C-200



MINIMUM PARKING CALCULATION		
USE	REQUIRED	
RETAIL ESTABLISHMENTS AND SERVICE ESTABLISHMENTS	1 SPACE/300 GFA	1,000 S.F. / 300 = 4 SPACES REQUIRED
RESIDENTIAL UNITS	1 PER 1-BED UNIT AND 1.5 PER OTHER UNITS, PLUS 1 VISITOR SPACE FOR EVERY 4 UNITS	(3) 2-BED UNITS= 5 SPACES REQUIRED
TOTAL REQUIRED (RESIDENTIAL + COMMERCIAL)		9 PARKING SPACES
TOTAL PROVIDED (ONSITE) FOR RESIDENTIAL USE		5 RESIDENTIAL PARKING SPACES (WAIVER REQUESTED)

SECTION 6.1.11
 PARKING LOT DIMENSIONS. PARKING LOTS WITH MORE THAN FIVE SPACES SHALL CONFORM WITH THE FOLLOWING: PARKING STALL DEPTH SHALL BE: 18'-0" AND WIDTH SHALL BE 9'-0".

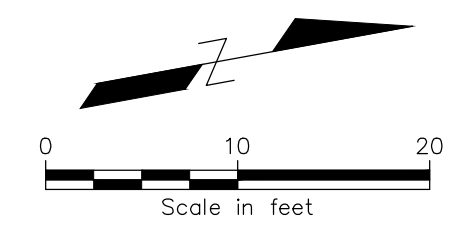
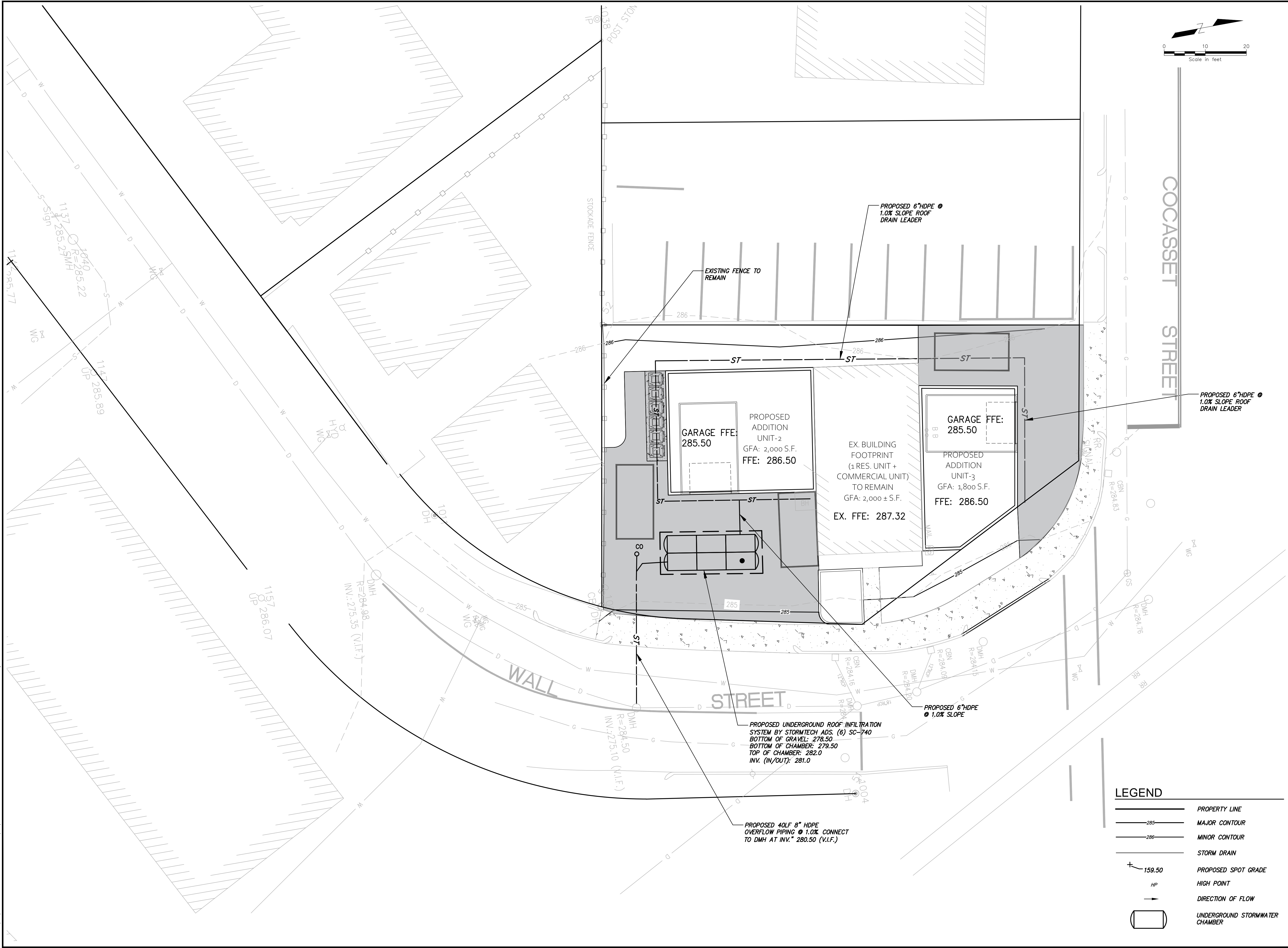
ZONING TABLE				
ZONING DISTRICT: GENERAL BUSINESS (GB) / OVERLAY DISTRICT: FOXBOROUGH CENTER OVERLAY DISTRICT (FCOD)				
DIMENSIONAL REQUIREMENTS	REQUIRED (GB)	REQUIRED (FCOD)	EXISTING	PROPOSED
MINIMUM LOT AREA	N/A	N/A	7,300 S.F.	7,300 S.F.
BUILDING FOOTPRINT	N/A	N/A	1,920 S.F.	3,240 S.F.
MINIMUM LOT FRONTAGE	0	20 FT	162 FEET	162 FEET
MAXIMUM BUILDING HEIGHT*	35 FT	40 FT	2 STORIES / LESS THAN 35 FT	2 STORIES / LESS THAN 35 FT
MAX. LOT COVERAGE	0.85	N/A	0.75	0.80
MINIMUM FRONT YARD SETBACK	15 FT	10 FT	2.5 FT (EX. NON-CONFORMING)	0 FT (WAIVER REQUESTED)
MINIMUM SIDE YARD SETBACK	0	10 FT	25.7 FT	15 FT
MINIMUM REAR YARD SETBACK	20 FT	10 FT	9.3 FT (EX. NON-CONFORMING)	9.3 FT (WAIVER REQUESTED/NO CHANGE)

*SECTION 4.1.3.4: HEIGHT REQUIREMENTS FOR STRUCTURES IN ANY NONRESIDENTIAL DISTRICT CAN BE INCREASED PURSUANT TO SECTION 4.4.2. OF THESE BYLAWS.

SECTION 9.2.7.1: SUBJECT TO THE PROVISIONS OF SECTION 4.4.2., NO PRINCIPAL STRUCTURE IN THE FCOD MAY BE CONSTRUCTED TO A HEIGHT IN EXCESS OF 60 FEET.

SECTION 4.4.2: SPECIAL PERMIT. UPON THE GRANTING OF A SPECIAL PERMIT PURSUANT TO THE REQUIREMENTS THAT ARE SET FORTH IN SECTION 10.4, ANY PRINCIPAL STRUCTURE IN ANY NONRESIDENTIAL DISTRICT MAY BE CONSTRUCTED TO A HEIGHT IN EXCESS OF THAT SPECIFIED IN TABLE 4-2 BUT THAT SHALL NOT EXCEED 60 FEET.

File: V:\OH_DATA\OFFICES\MM78\OH\W\OH\WOMBORO\...SHEET FILES\C-200_SITE PLAN_REVISED.DWG
 Saved: 3/13/2024 10:58:10 PM. Plotter: 3/13/2024 11:26:35 PM. Current User: Dan, Hazem, LastSavedBy: 5400



LEGEND

	PROPERTY LINE
	MAJOR CONTOUR
	MINOR CONTOUR
	STORM DRAIN
	PROPOSED SPOT GRADE
	HIGH POINT
	DIRECTION OF FLOW
	UNDERGROUND STORMWATER CHAMBER

HD Design
 161 W. High Street,
 Avon, MA 02322
 Cell: (508) 840-1045
 Email: hazem.dani87@gmail.com



No.	Submit / Revision	Appr. By	Date
0	SITE PLAN REVIEW - APP	HD	09/16/23
1	RESPONSE TO COMMENTS	HD	03/14/24

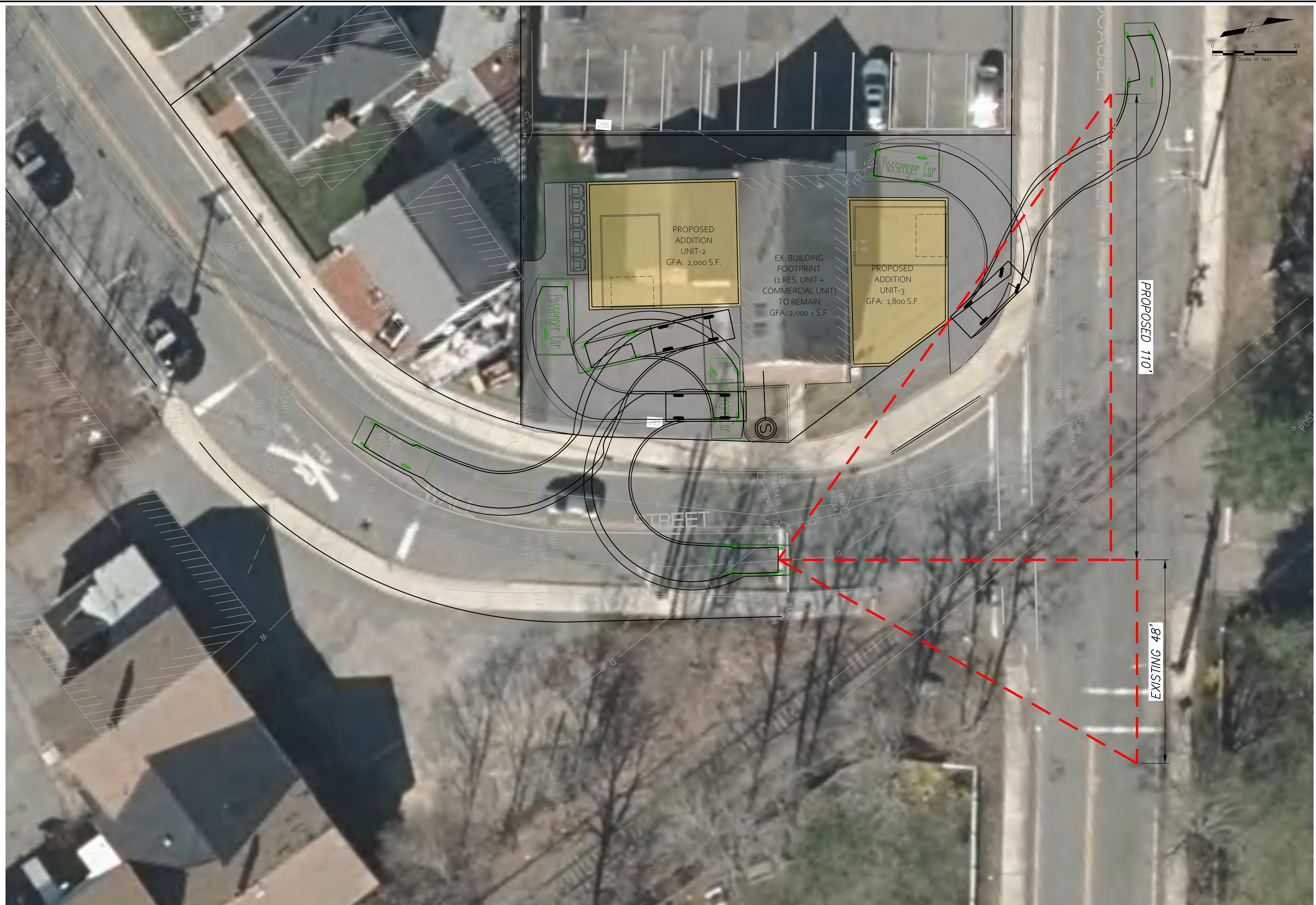
TNC DEVELOPMENT LLC
 58 WILLOW STREET
 NORWOOD, MA 02062

SITE PLANS
BUILDING EXPANSION
MIXED-USE BUILDING
 30-32 WALL STREET, FOXBOROUGH, MA

GRADING AND DRAINAGE PLAN

Designed By: HD	Drawn By: HD	Checked By: -
Issue Date: 09/18/2023	Project No: 12022	Scale: 1"=10'

Drawing No:
C-201



LEGEND

--- SIGHT DISTANCE TRIANGLE

HD Design
 161 W. High Street,
 Avon, MA 02322
 Cell: (508) 840-1045
 Email: hazem.dani87@gmail.com



No.	Submit / Revision	Appr. By	Date
0	SITE PLAN REVIEW - APP	HD	09/16/23
1	RESPONSE TO COMMENTS	HD	03/14/24

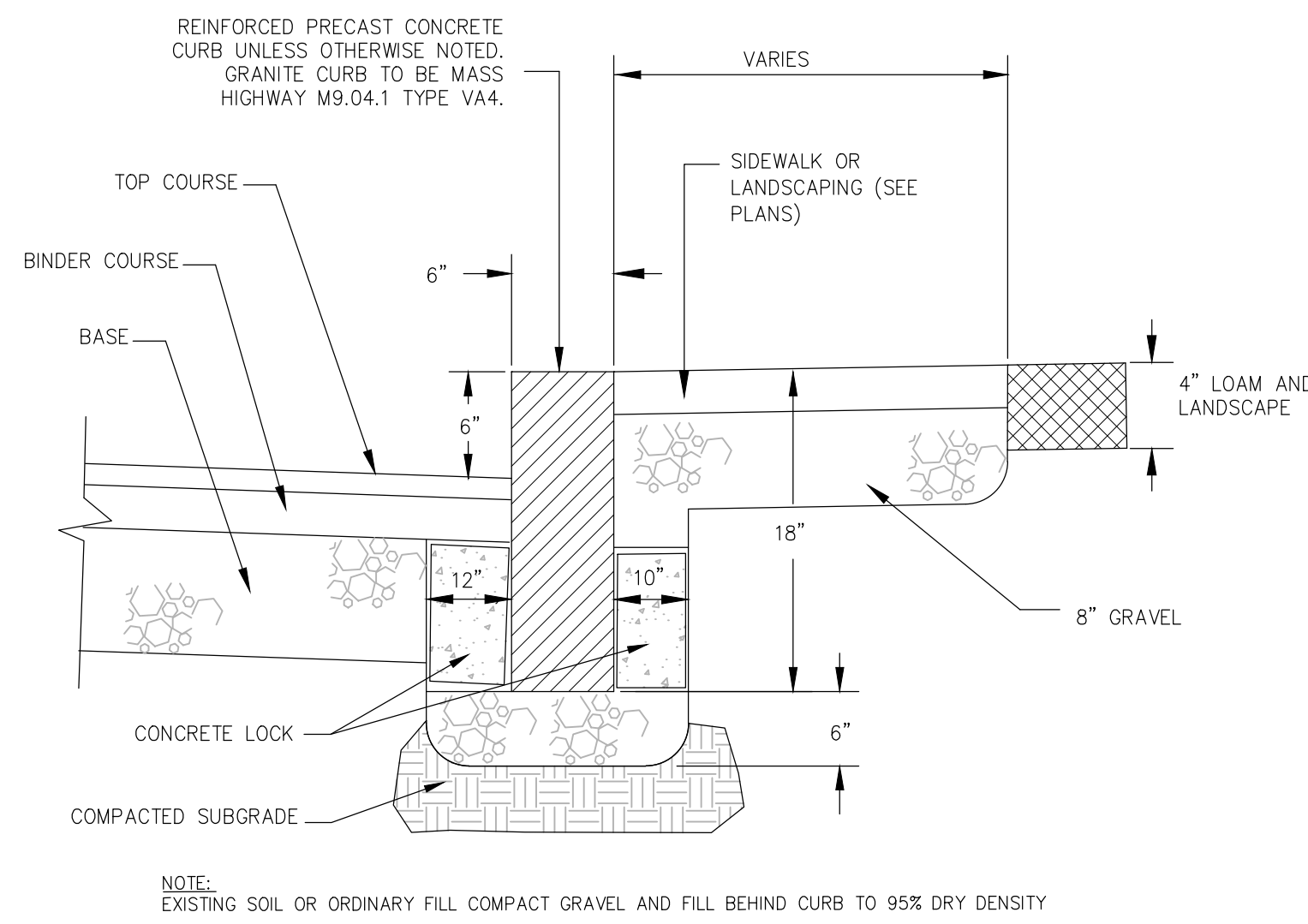
TNC DEVELOPMENT LLC
 APPLICANT / OWNER
58 WILLOW STREET
NORWOOD, MA 02062

SITE PLANS
BUILDING EXPANSION
MIXED-USE BUILDING
 30-32 WALL STREET, FOXBOROUGH, MA

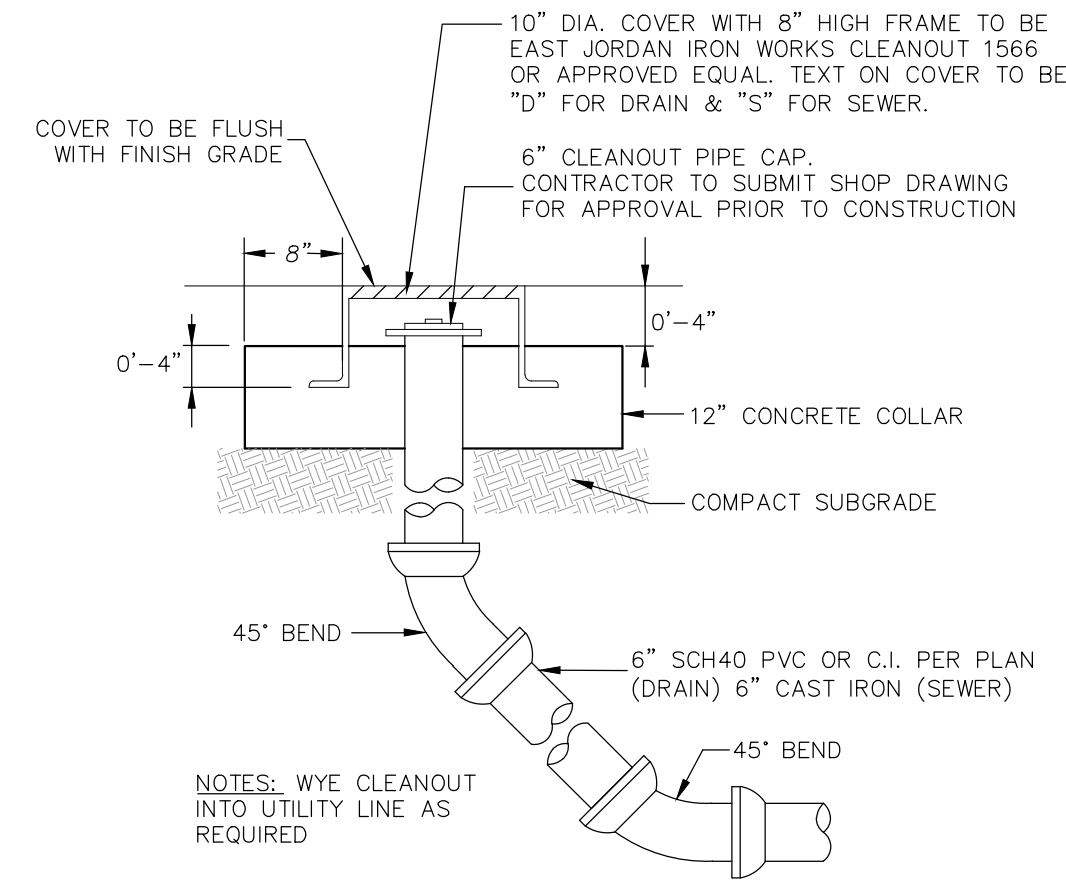
VEHICLE TURNING MOVEMENT PLAN

Designed By: HD	Drawn By: HD	Checked By: -
Issue Date: 09/18/2023	Project No: 12022	Scale: 1"=10'

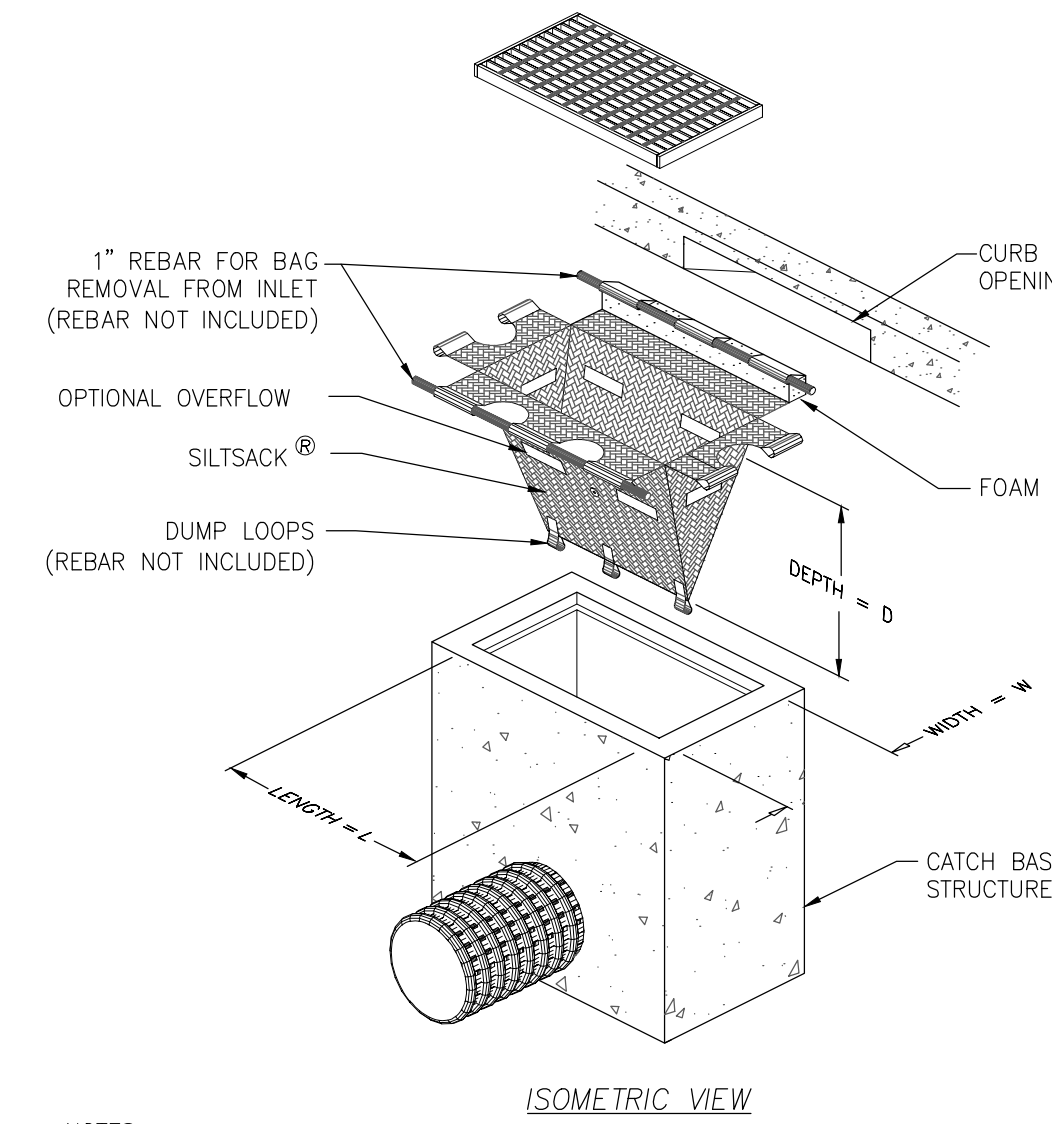
Drawing No:
C-300



1 PRECAST CONCRETE OR VERTICAL GRANITE CURB
SCALE: NO SCALE



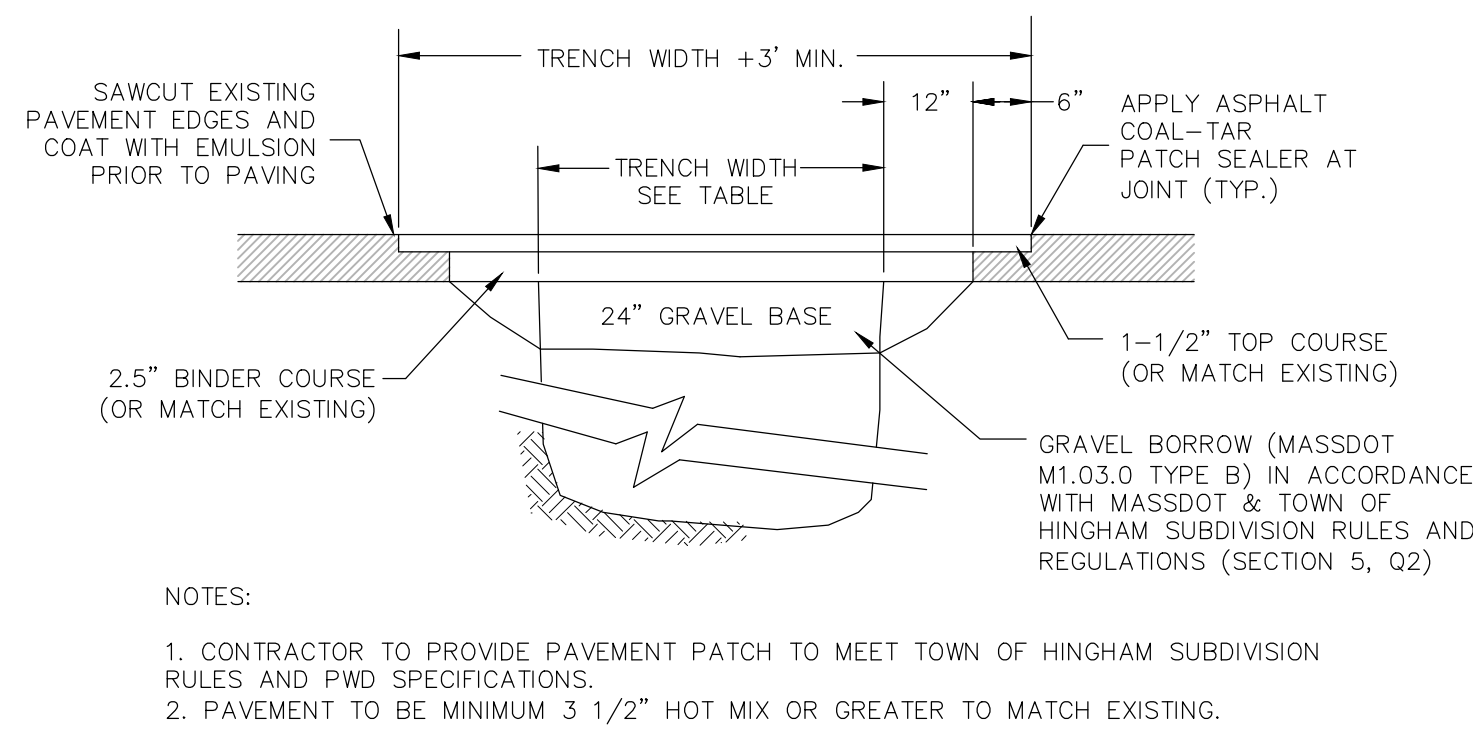
2 SEWER OR STORMWATER CLEANOUT
SCALE: NO SCALE



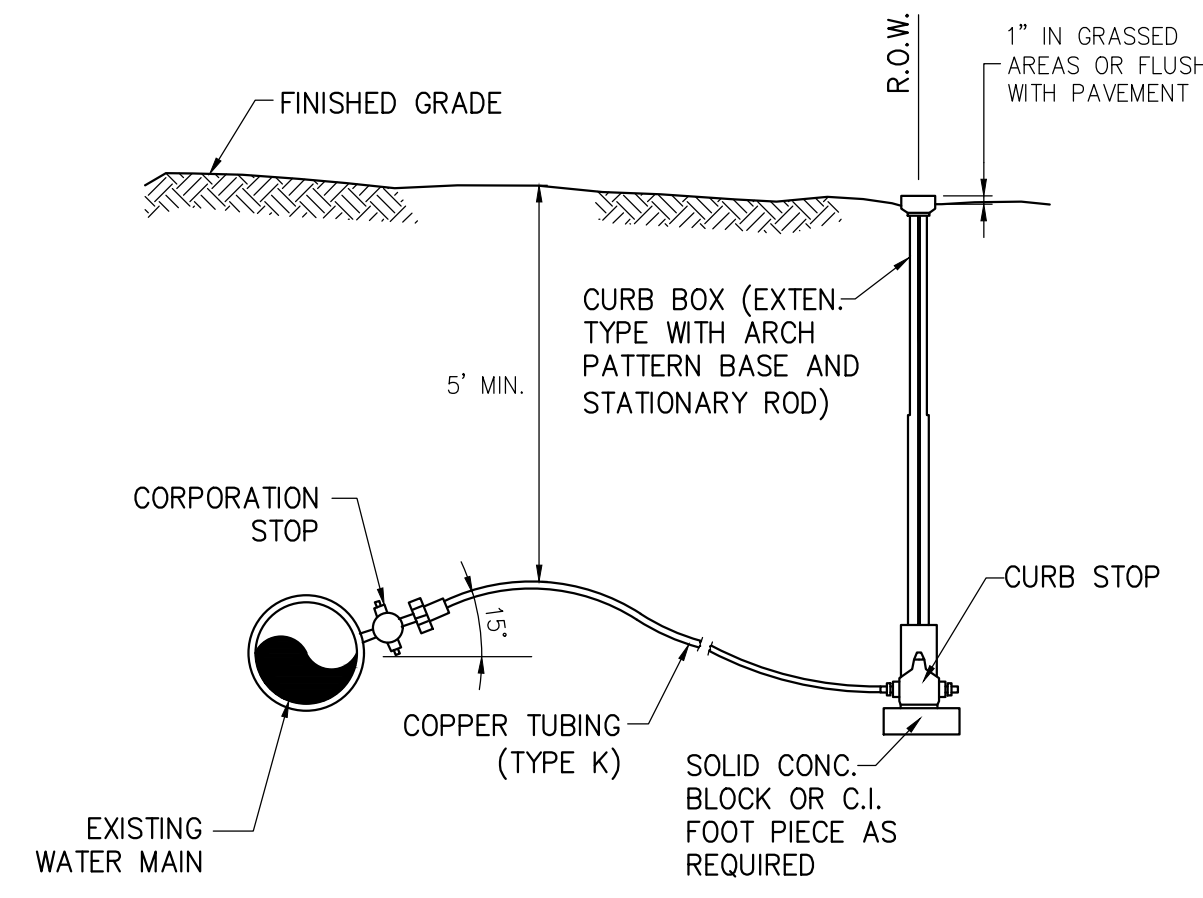
- NOTES:
- REMOVE ACCUMULATED SEDIMENT WHEN CAPACITY IS REDUCED BY HALF OR PER MANUFACTURER'S RECOMMENDATIONS.
 - CATCH BASIN INSERT TO BE SILTSACK B[®] PAC ENVIRONMENTAL, PHONE: 1-800-448-3636, ocfenvironmental.com OR EQUIVALENT.
 - INSTALL ON ALL EXISTING CATCH BASINS WITHIN SNOW BIRD AVENUE AND ADJACENT CATCH BASINS ON INTERSECTION ROADS IF ROADWAY DRAINAGE CAN REACH THOSE.

3 DRAIN INLET PROTECTION
SCALE: NO SCALE

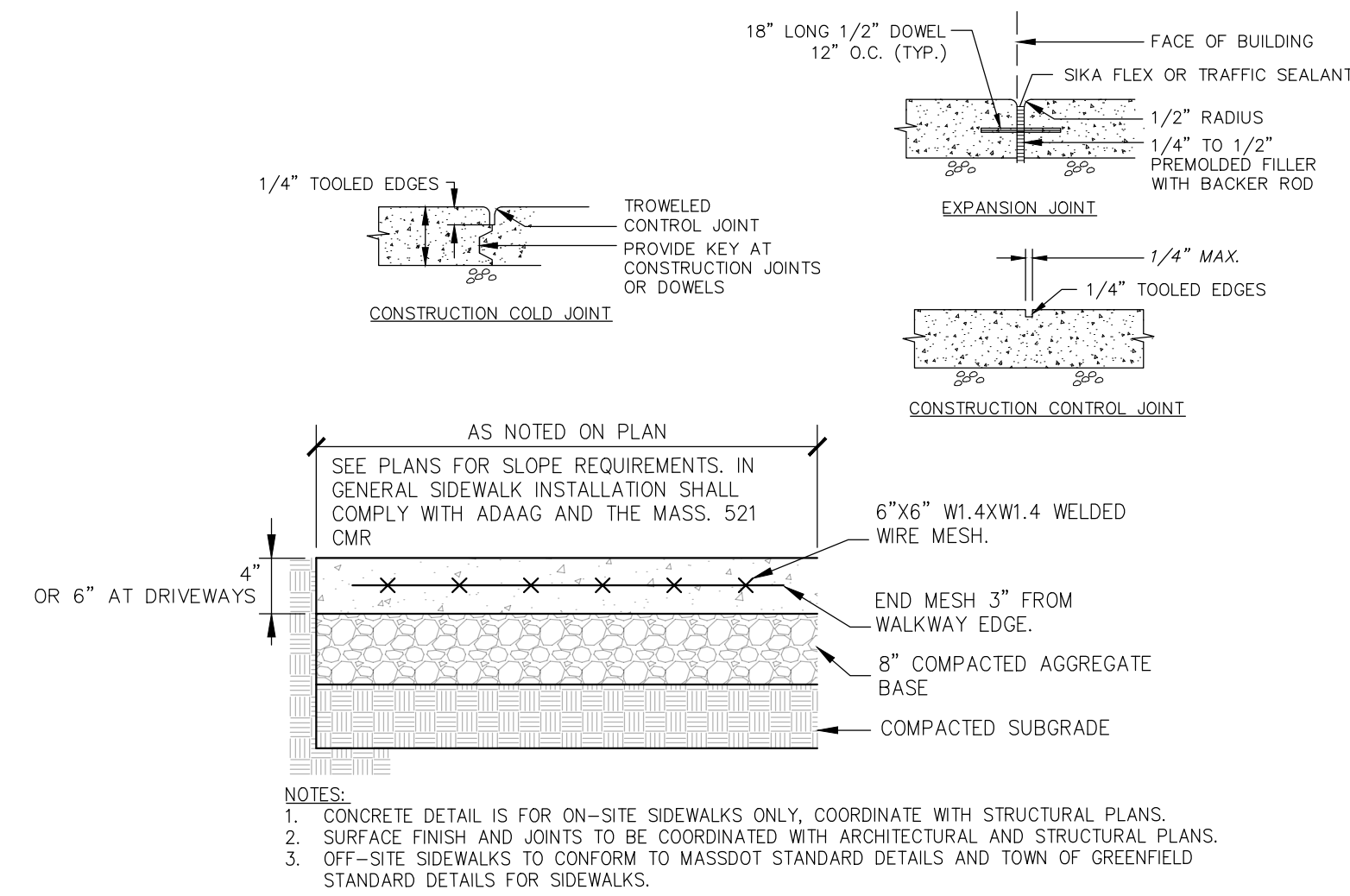
TRENCH WIDTH, W		
D	W UNSHEETED	W SHEETED
DIAMETER OF PIPE		
TO 12"	3'	4'
14" TO 24"	4'	5'
30" TO 36"	5'	6'



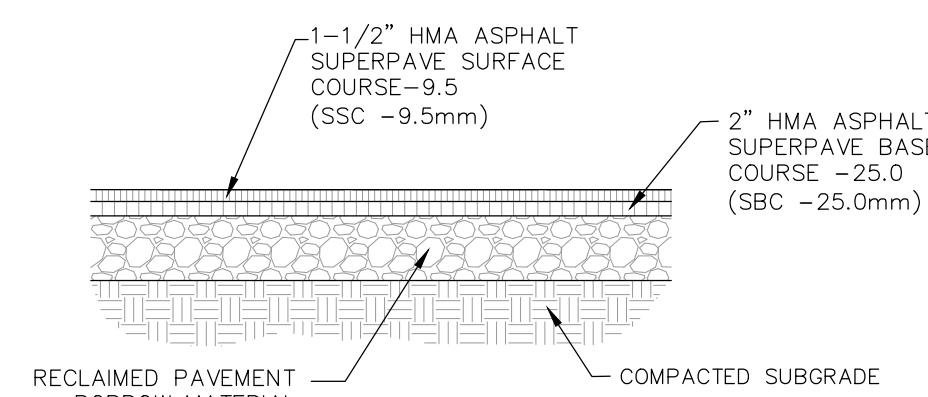
4 PAVEMENT PATCH DETAIL FOR TRENCH SECTIONS
SCALE: NO SCALE



5 WATER SERVICE CONNECTION DETAIL
SCALE: NO SCALE

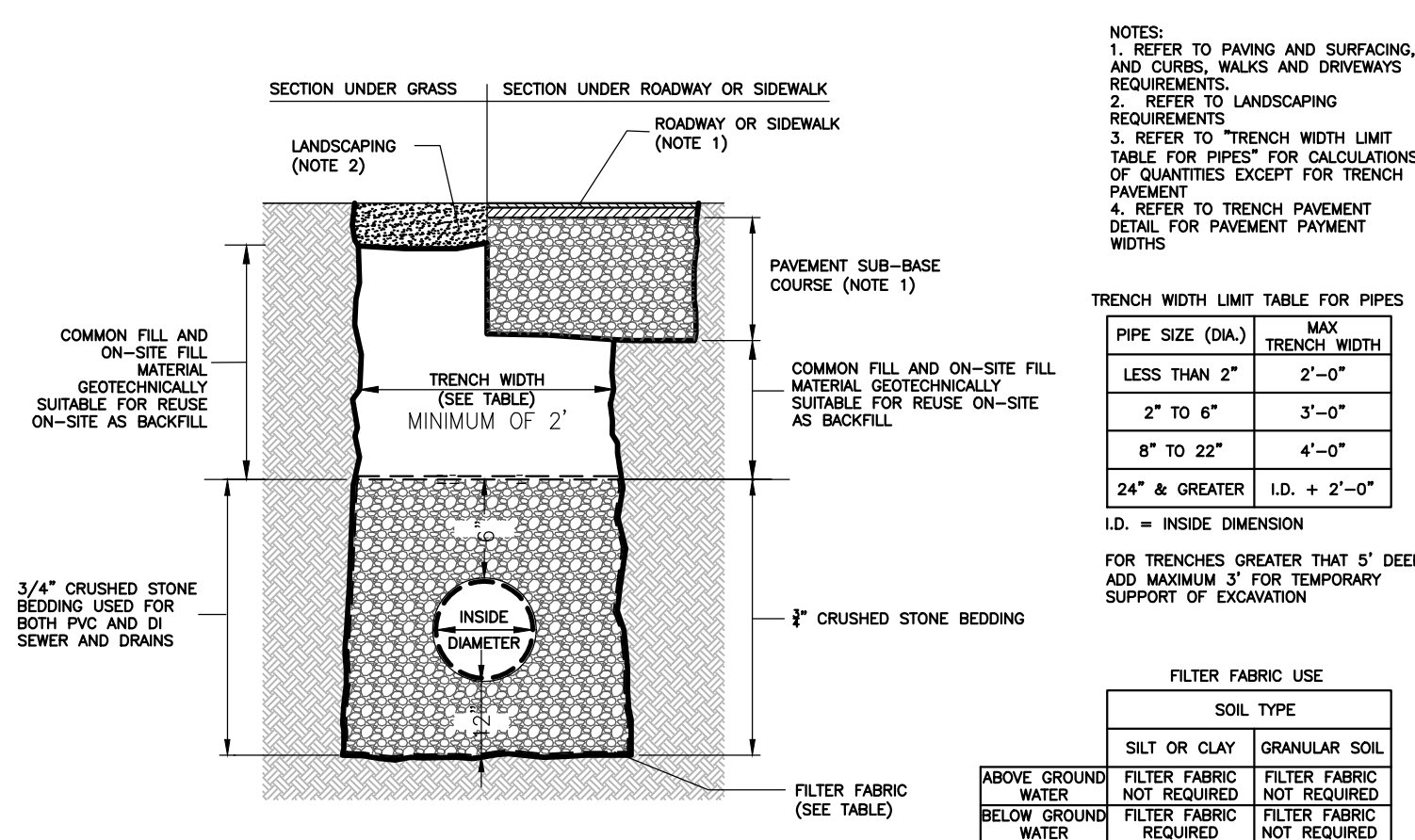


6 SIDEWALK DETAIL
SCALE: NO SCALE



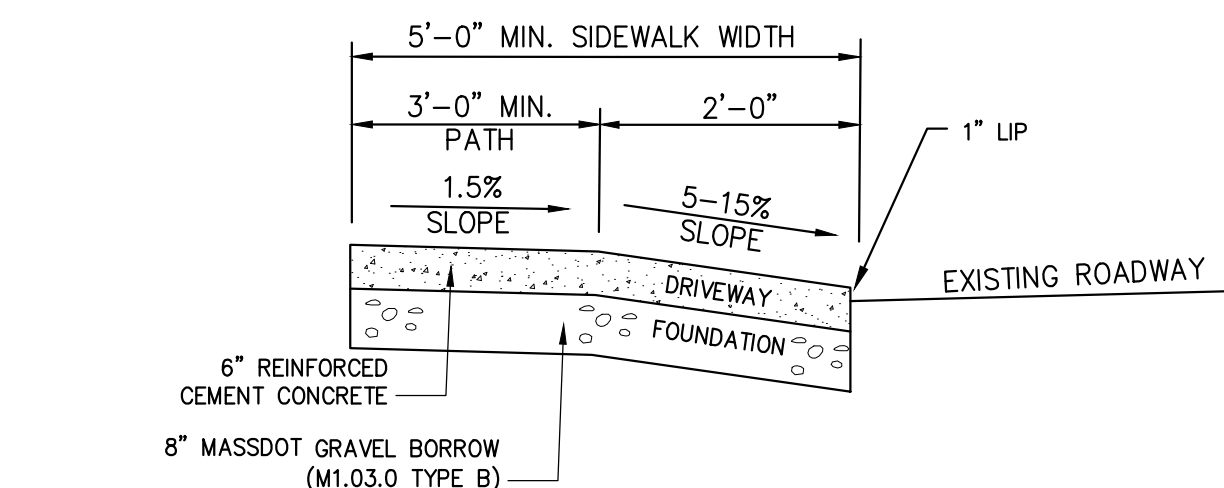
- NOTE:
- CONTRACTOR WILL PULVERIZE AND MIX IN PLACE THE EXISTING PAVEMENT AND SUBGRADE WITH A RECLAMATION MACHINE TO A MAXIMUM DEPTH OF 12".
 - CONTRACTOR TO TEST RECLAIMED MATERIAL AGAINST MASSDOT SPECIFICATION M1.09.0. REPORT RESULTS TO ENGINEER AND OWNER.
 - WHERE PROPOSE FINISH GRADE CLOSELY MATCHES EXISTING GRADE THE CONTRACTOR WILL FINE GRADE AND COMPACT THE AREA AND REMOVE EXCESS MATERIAL IF NECESSARY BEFORE INSTALLING PAVEMENT.
 - COMPACTED LIFTS NOT TO EXCEED 8 INCHES BETWEEN COURSES.
 - CONTRACTOR TO PROOF ROLL SUBGRADE PRIOR TO GRAVEL PLACEMENT.

7 BITUMINOUS PAVEMENT OVER RECLAIMED BASE COURSE
SCALE: NO SCALE

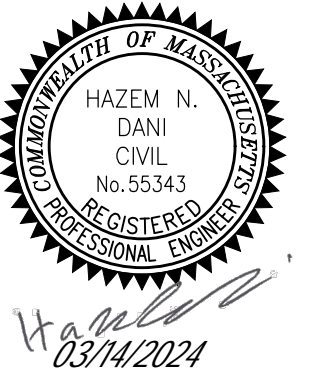


- NOTES:
- REFER TO PAVING AND SURFACING, AND CURBS, WALKS AND DRIVEWAYS REQUIREMENTS.
 - REFER TO LANDSCAPING REQUIREMENTS.
 - REFER TO TRENCH WIDTH LIMIT TABLE FOR PIPES FOR CALCULATIONS OF QUANTITIES EXCEPT FOR TRENCH PAVEMENT.
 - REFER TO TRENCH PAVEMENT DETAIL FOR PAVEMENT PAVEMENT WIDTHS.
- | PIPE SIZE (DIA.) | MAX TRENCH WIDTH |
|------------------|------------------|
| LESS THAN 2" | 2'-0" |
| 2" TO 8" | 3'-0" |
| 8" TO 22" | 4'-0" |
| 24" & GREATER | 1D. + 2'-0" |
- I.D. = INSIDE DIMENSION
FOR TRENCHES GREATER THAN 5' DEEP ADD MAXIMUM 3' FOR TEMPORARY SUPPORT OF EXCAVATION
- | FILTER FABRIC USE | | SOIL TYPE | |
|----------------------------|----------------------------|----------------------------|----------------------------|
| ABOVE GROUND | BELOW GROUND | SILT OR CLAY | GRANULAR SOIL |
| FILTER FABRIC NOT REQUIRED | FILTER FABRIC NOT REQUIRED | FILTER FABRIC NOT REQUIRED | FILTER FABRIC NOT REQUIRED |
| FILTER FABRIC REQUIRED | FILTER FABRIC REQUIRED | FILTER FABRIC NOT REQUIRED | FILTER FABRIC NOT REQUIRED |

8 UTILITY TRENCH DETAIL
SCALE: NO SCALE



9 TYPICAL DRIVEWAY ENTRANCE CROSS SECTION
SCALE: NO SCALE



No.	Submit / Revision	App'd By	Date
0	SITE PLAN REVIEW - APP	HD	09/15/23
1	RESPONSE TO COMMENTS	HD	03/14/24

TNC DEVELOPMENT LLC
58 WILLOW STREET
NORWOOD, MA 02062

SITE PLANS
BUILDING EXPANSION
MIXED-USE BUILDING
30-32 WALL STREET, FOXBOROUGH, MA

SITE DETAILS - 1

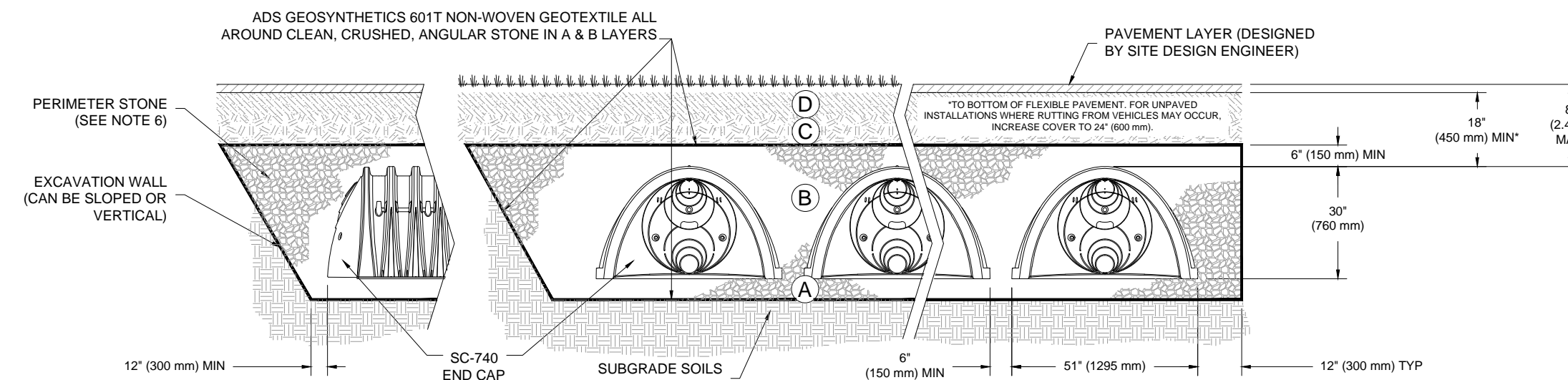
Designed By: HD	Drawn By: HD	Checked By: -
Issue Date: 09/18/2023	Project No: 12022	Scale:

Drawing No:
C-601

ACCEPTABLE FILL MATERIALS: STORMTECH SC-740 CHAMBER SYSTEMS

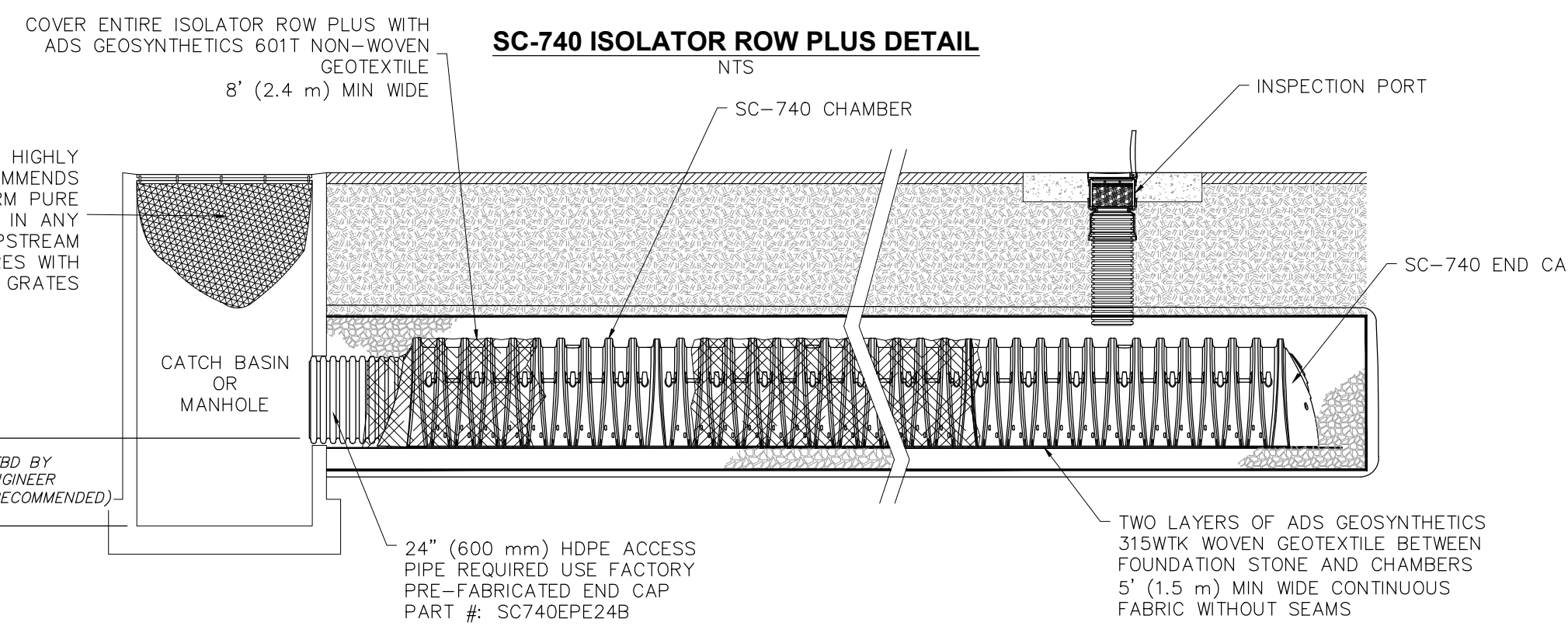
MATERIAL LOCATION	DESCRIPTION	AASHTO MATERIAL CLASSIFICATIONS	COMPACTION / DENSITY REQUIREMENT
D FINAL FILL: FILL MATERIAL FOR LAYER 'D' STARTS FROM THE TOP OF THE 'C' LAYER TO THE BOTTOM OF FLEXIBLE PAVEMENT OR UNPAVED FINISHED GRADE ABOVE. NOTE THAT PAVEMENT SUBBASE MAY BE PART OF THE 'D' LAYER.	ANY SOIL/ROCK MATERIALS, NATIVE SOILS, OR PER ENGINEER'S PLANS. CHECK PLANS FOR PAVEMENT SUBGRADE REQUIREMENTS.	N/A	PREPARE PER SITE DESIGN ENGINEER'S PLANS. PAVED INSTALLATIONS MAY HAVE STRINGENT MATERIAL AND PREPARATION REQUIREMENTS.
C INITIAL FILL: FILL MATERIAL FOR LAYER 'C' STARTS FROM THE TOP OF THE EMBEDMENT STONE (A LAYER) TO 150 (48 mm) ABOVE THE TOP OF THE CHAMBER. NOTE THAT PAVEMENT SUBBASE MAY BE A PART OF THE 'C' LAYER.	GRANULAR WELL-GRADED SOIL/AGGREGATE MIXTURES, <35% FINES OR PROCESSED AGGREGATE. MOST PAVEMENT SUBBASE MATERIALS CAN BE USED IN LIEU OF THIS LAYER.	AASHTO M145 ¹ A-1, A-2.4, A-3 OR AASHTO M43 ¹ 3, 357, 4, 467, 5, 56, 57, 6, 67, 68, 7, 68, 8, 89, 9, 10	BEGIN COMPACTIONS AFTER 12" (300 mm) OF MATERIAL OVER THE CHAMBERS IS REACHED. COMPACT ADDITIONAL LAYERS IN 6" (150 mm) MAX LIFTS TO A MIN. 90% PROCTOR DENSITY FOR WELL GRADED MATERIAL AND 90% RELATIVE DENSITY FOR PROCESSED AGGREGATE MATERIALS. ROLLER GROSS VEHICLE WEIGHT NOT TO EXCEED 12,000 lbs (5334). DYNAMIC FORCE NOT TO EXCEED 20,000 lbs (89 kN).
B EMBEDMENT STONE: FILL SURROUNDING THE CHAMBERS FROM THE FOUNDATION STONE (A LAYER) TO THE 'C' LAYER ABOVE.	CLEAN, CRUSHED, ANGULAR STONE, NOMINAL SIZE DISTRIBUTION BETWEEN 3/4-2 INCH (20-50 mm)	AASHTO M43 ¹ 3, 357, 4, 467, 5, 56, 57	NO COMPACTION REQUIRED.
A FOUNDATION STONE: FILL BELOW CHAMBERS FROM THE SUBGRADE UP TO THE FOOT (BOTTOM) OF THE CHAMBER.	CLEAN, CRUSHED, ANGULAR STONE, NOMINAL SIZE DISTRIBUTION BETWEEN 3/4-2 INCH (20-50 mm)	AASHTO M43 ¹ 3, 357, 4, 467, 5, 56, 57	PLATE COMPACT OR ROLL TO ACHIEVE A FLAT SURFACE. ²

- PLEASE NOTE:
- THE LISTED AASHTO DESIGNATIONS ARE FOR GRADATIONS ONLY. THE STONE MUST ALSO BE CLEAN, CRUSHED, ANGULAR. FOR EXAMPLE, A SPECIFICATION FOR #4 STONE WOULD STATE: "CLEAN, CRUSHED, ANGULAR NO. 4 (AASHTO M43) STONE".
 - STORMTECH COMPACTION REQUIREMENTS ARE MET FOR 'A' LOCATION MATERIALS WHEN PLACED AND COMPACTED IN 6" (150 mm) (MAX) LIFTS USING TWO FULL COVERAGES WITH A VIBRATORY COMPACTOR.
 - WHERE INFILTRATION SURFACES MAY BE COMPROMISED BY COMPACTION FOR STANDARD DESIGN LOAD CONDITIONS, A FLAT SURFACE MAY BE ACHIEVED BY RAKING OR DRAGGING WITHOUT COMPACTION EQUIPMENT. FOR SPECIAL LOAD DESIGNS, CONTACT STORMTECH FOR COMPACTION REQUIREMENTS.



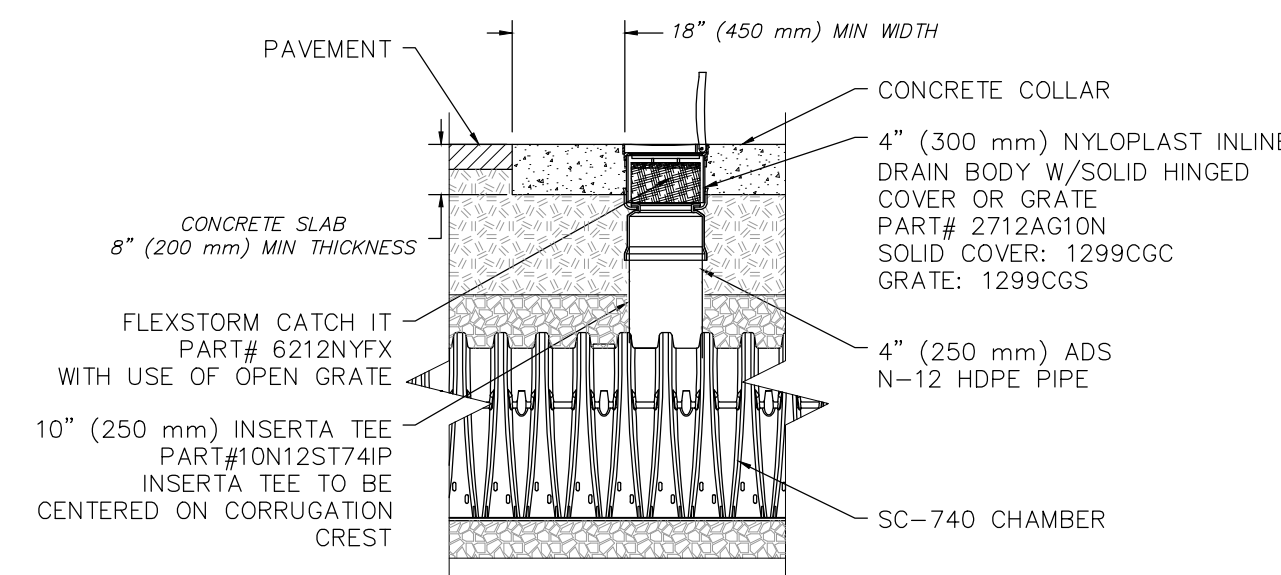
NOTES:

- SC-740 CHAMBERS SHALL CONFORM TO THE REQUIREMENTS OF ASTM F2418 "STANDARD SPECIFICATION FOR POLYPROPYLENE (PP) CORRUGATED WALL STORMWATER COLLECTION CHAMBERS", OR ASTM F2922 "STANDARD SPECIFICATION FOR POLYETHYLENE (PE) CORRUGATED WALL STORMWATER COLLECTION CHAMBERS".
- SC-740 CHAMBERS SHALL BE DESIGNED IN ACCORDANCE WITH ASTM F2787 "STANDARD PRACTICE FOR STRUCTURAL DESIGN OF THERMOPLASTIC CORRUGATED WALL STORMWATER COLLECTION CHAMBERS".
- "ACCEPTABLE FILL MATERIALS" TABLE ABOVE PROVIDES MATERIAL LOCATIONS, DESCRIPTIONS, GRADATIONS, AND COMPACTION REQUIREMENTS FOR FOUNDATION, EMBEDMENT, AND FILL MATERIALS.
- THE "SITE DESIGN ENGINEER" REFERS TO THE ENGINEER RESPONSIBLE FOR THE DESIGN AND LAYOUT OF THE STORMTECH CHAMBERS FOR THIS PROJECT.
- THE SITE DESIGN ENGINEER IS RESPONSIBLE FOR ASSESSING THE BEARING RESISTANCE (ALLOWABLE BEARING CAPACITY) OF THE SUBGRADE SOILS AND THE DEPTH OF FOUNDATION STONE WITH CONSIDERATION FOR THE RANGE OF EXPECTED SOIL MOISTURE CONDITIONS.
- PERIMETER STONE MUST BE EXTENDED HORIZONTALLY TO THE EXCAVATION WALL FOR BOTH VERTICAL AND SLOPED EXCAVATION WALLS.
- ONCE LAYER 'C' IS PLACED, ANY SOIL/MATERIAL CAN BE PLACED IN LAYER 'D' UP TO THE FINISHED GRADE. MOST PAVEMENT SUBBASE SOILS CAN BE USED TO REPLACE THE MATERIAL REQUIREMENTS OF LAYER 'C' OR 'D' AT THE SITE DESIGN ENGINEER'S DISCRETION.
- STORMTECH SC-740 UNITS ARE H20 RATED FOR VEHICLE LOADS.



INSPECTION & MAINTENANCE

- STEP 1) INSPECT ISOLATOR ROW PLUS FOR SEDIMENT
- INSPECTION PORTS (IF PRESENT)
 - REMOVE/OPEN LID ON NYLOPLAST INLINE DRAIN
 - REMOVE AND CLEAN FLEXSTORM FILTER IF INSTALLED
 - USING A FLASHLIGHT AND STADIA ROD, MEASURE DEPTH OF SEDIMENT AND RECORD ON MAINTENANCE LOG
 - LOWER A CAMERA INTO ISOLATOR ROW PLUS FOR VISUAL INSPECTION OF SEDIMENT LEVELS (OPTIONAL)
 - IF SEDIMENT IS AT, OR ABOVE, 3" (80 mm) PROCEED TO STEP 2. IF NOT, PROCEED TO STEP 3.
 - ALL ISOLATOR ROW PLUS
 - REMOVE COVER FROM STRUCTURE AT UPSTREAM END OF ISOLATOR ROW PLUS
 - USING A FLASHLIGHT, INSPECT DOWN THE ISOLATOR ROW PLUS THROUGH OUTLET PIPE
 - MIRRORS ON POLES OR CAMERAS MAY BE USED TO AVOID A CONFINED SPACE ENTRY
 - FOLLOW OSHA REGULATIONS FOR CONFINED SPACE ENTRY IF ENTERING MANHOLE
 - IF SEDIMENT IS AT, OR ABOVE, 3" (80 mm) PROCEED TO STEP 2. IF NOT, PROCEED TO STEP 3.
- STEP 2) CLEAN OUT ISOLATOR ROW PLUS USING THE JETVAC PROCESS
- A FIXED INSULATOR CLEANING NOZZLE WITH REAR FACING SPREAD OF 45° (1.1 m) OR MORE IS PREFERRED
 - APPLY MULTIPLE PASSES OF JETVAC UNTIL BACKFLUSH WATER IS CLEAN
 - VACUUM STRUCTURE SUMP AS REQUIRED
- STEP 3) REPLACE ALL COVERS, GRATES, FILTERS, AND LIDS; RECORD OBSERVATIONS AND ACTIONS.
- STEP 4) INSPECT AND CLEAN BASINS AND MANHOLES UPSTREAM OF THE STORMTECH SYSTEM.



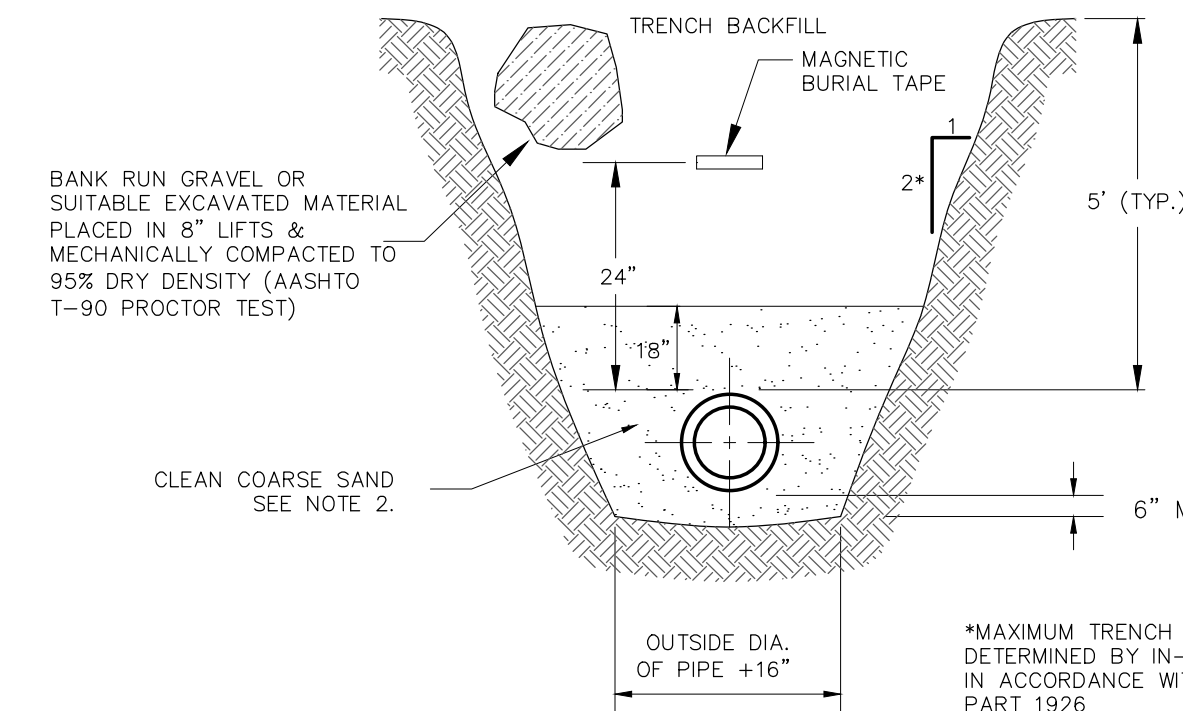
NOTES

- INSPECT EVERY 6 MONTHS DURING THE FIRST YEAR OF OPERATION. ADJUST THE INSPECTION INTERVAL BASED ON PREVIOUS OBSERVATIONS OF SEDIMENT ACCUMULATION AND HIGH WATER ELEVATIONS.
- CONDUCT JETTING AND VACUUMING ANNUALLY OR WHEN INSPECTION SHOWS THAT MAINTENANCE IS NECESSARY.

SC-740 TECHNICAL SPECIFICATION

2 TYPICAL UTILITY CROSSINGS

SCALE: NO SCALE

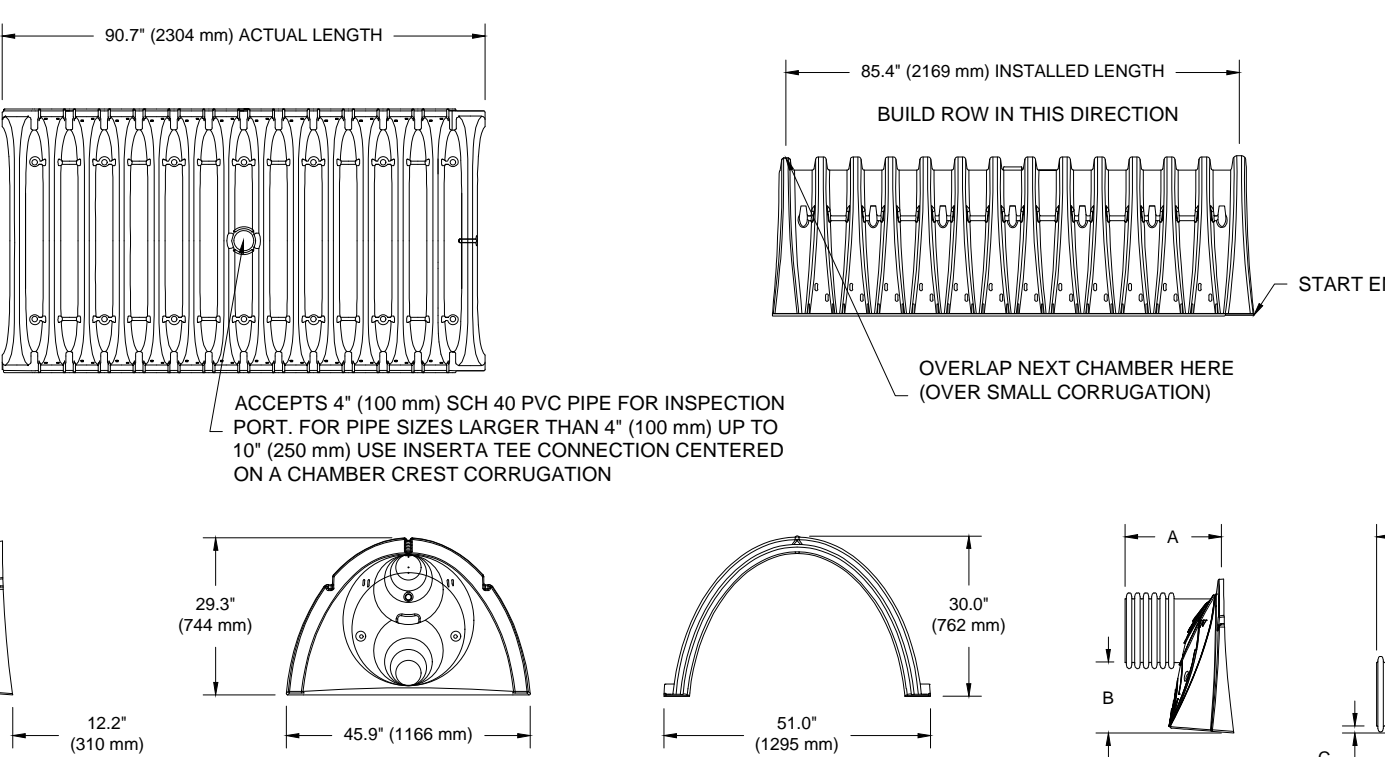


NOTES:

- NO DEBRIS, FROZEN MATERIAL, LARGE CLODS, STONES OR ORGANIC MATERIAL SHALL BE PLACED IN TRENCH BACKFILL. TRENCH BACKFILL SHALL CONSIST OF SUITABLE EXCAVATED MATERIAL OR OTHER APPROVED MATERIAL.
- CLEAN COARSE SAND PASSING 1/4" SIEVE, EFFECTIVE GRAIN SIZE SHALL BE BETWEEN 0.3 TO 0.6 MM AND THE UNIFORMITY COEFFICIENT SHALL BE 3.5 OR LESS.
- BURIAL TAPE MARKED "CAUTION BURIED SEWER BELOW" OVER SEWER MAIN. TRACER WIRE BELOW RECOMMENDED.
- CONTRACTOR TO PROVIDE AS-BUILT LOCATION OF ALL FORCE MAIN AND SEPTIC TANK EFFLUENT COMPONENTS.
- IN AREAS SUBJECT TO FROST OR <5 FT. COVER, CONTRACTOR TO PROVIDE PIPE INSULATION.

3 LOW PRESSURE FORCE MAIN INSTALLATION

SCALE: NO SCALE



NOMINAL CHAMBER SPECIFICATIONS

SIZE (W X H X INSTALLED LENGTH)	51.0" X 30.0" X 85.4" (1295 mm X 762 mm X 2169 mm)
CHAMBER STORAGE	45.9 CUBIC FEET (13.0 m ³)
MINIMUM INSTALLED STORAGE*	74.9 CUBIC FEET (2.12 m ³)
WEIGHT	75.0 lbs. (33.6 kg)

*ASSUMES 6" (152 mm) STONE ABOVE, BELOW, AND BETWEEN CHAMBERS

STUBS AT BOTTOM OF END CAP FOR PART NUMBERS ENDING WITH "B"
STUBS AT TOP OF END CAP FOR PART NUMBERS ENDING WITH "T"

PART #	STUB	A	B	C
SC740EPE06T / SC740EPE06TPC	6" (150 mm)	10.9" (277 mm)	18.5" (470 mm)	---
SC740EPE08B / SC740EPE08BPC	8" (200 mm)	12.2" (310 mm)	16.5" (419 mm)	0.5" (13 mm)
SC740EPE08T / SC740EPE08TPC	8" (200 mm)	12.2" (310 mm)	16.5" (419 mm)	---
SC740EPE08B / SC740EPE08BPC	8" (200 mm)	12.2" (310 mm)	16.5" (419 mm)	0.6" (15 mm)
SC740EPE10T / SC740EPE10TPC	10" (250 mm)	13.4" (340 mm)	14.5" (368 mm)	---
SC740EPE10B / SC740EPE10BPC	10" (250 mm)	13.4" (340 mm)	14.5" (368 mm)	0.7" (18 mm)
SC740EPE12T / SC740EPE12TPC	12" (300 mm)	14.7" (373 mm)	12.5" (318 mm)	---
SC740EPE12B / SC740EPE12BPC	12" (300 mm)	14.7" (373 mm)	12.5" (318 mm)	1.2" (30 mm)
SC740EPE15T / SC740EPE15TPC	15" (375 mm)	18.4" (467 mm)	9.0" (229 mm)	---
SC740EPE15B / SC740EPE15BPC	15" (375 mm)	18.4" (467 mm)	1.3" (33 mm)	---
SC740EPE18T / SC740EPE18TPC	18" (450 mm)	19.7" (500 mm)	5.0" (127 mm)	---
SC740EPE18B / SC740EPE18BPC	18" (450 mm)	19.7" (500 mm)	1.6" (41 mm)	---
SC740EPE24B*	24" (600 mm)	18.5" (470 mm)	---	0.1" (3 mm)

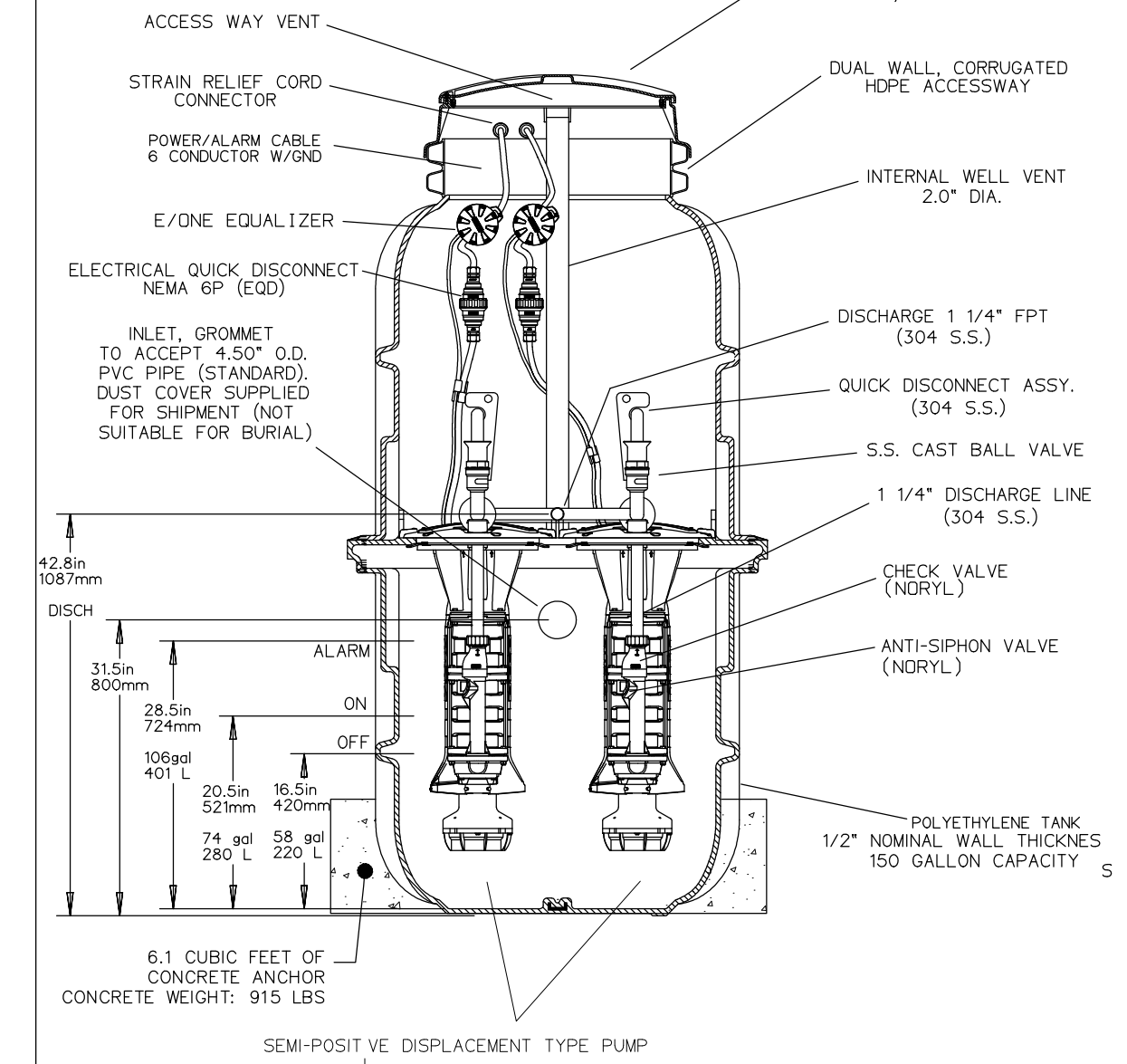
ALL STUBS, EXCEPT FOR THE SC740EPE24B ARE PLACED AT BOTTOM OF END CAP SUCH THAT THE OUTSIDE DIAMETER OF THE STUB IS FLUSH WITH THE BOTTOM OF THE END CAP. FOR ADDITIONAL INFORMATION CONTACT STORMTECH AT 1-888-892-2894.

*FOR THE SC740EPE24B THE 24" (600 mm) STUB LIES BELOW THE BOTTOM OF THE END CAP APPROXIMATELY 1.75" (44 mm). BACKFILL MATERIAL SHALL BE REMOVED FROM BELOW THE N-12 STUB SO THAT THE FITTING SITS LEVEL.

NOTE: ALL DIMENSIONS ARE NOMINAL

4 DUPLEX GRINDER PUMP STATION DETAIL

SCALE: NO SCALE



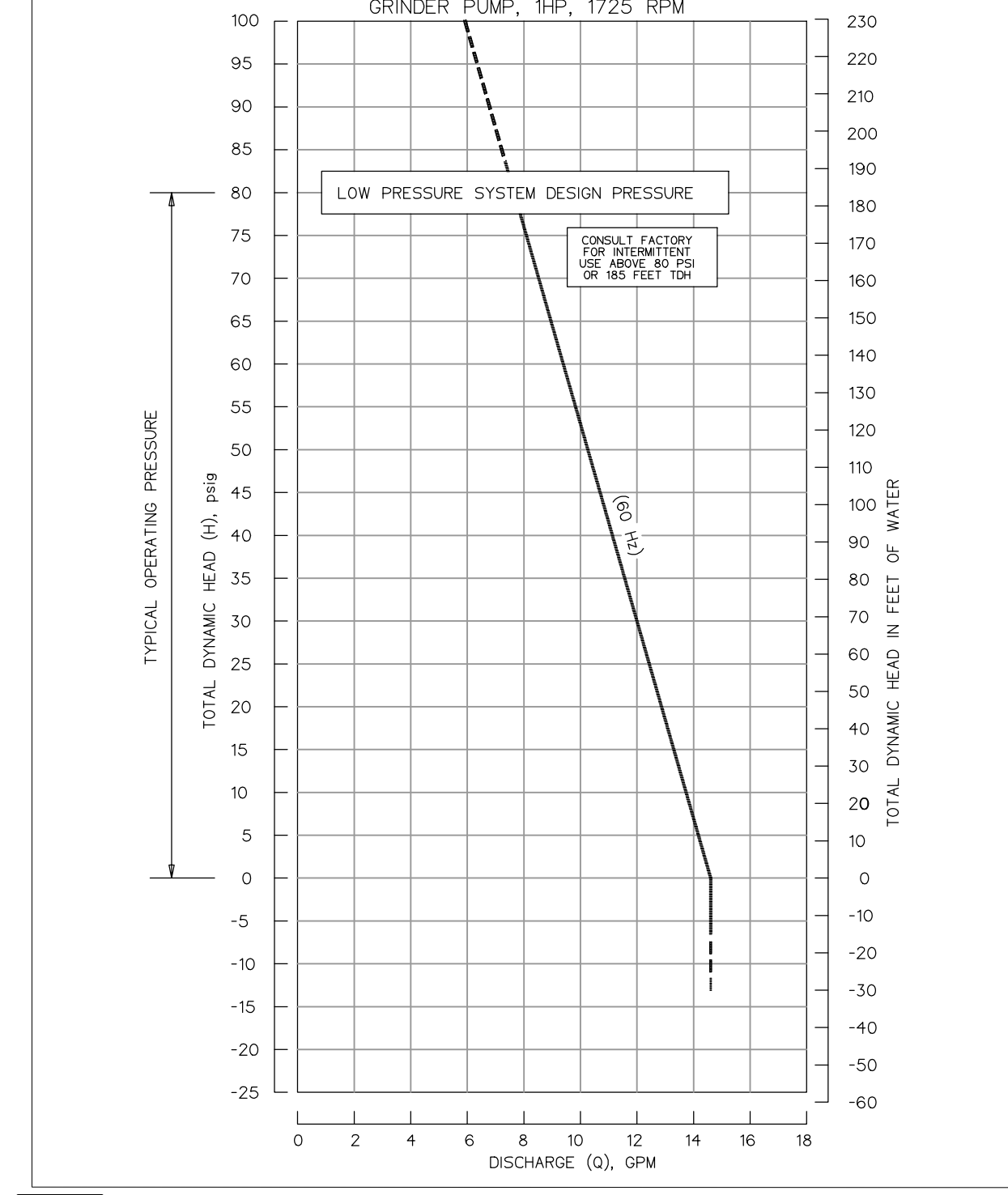
NOTES:

- CONTROLLERS TO BE HARD WIRED.
- SUBMIT SHOP DRAWINGS WITH BUOYANCY CALCULATIONS FOR APPROVAL PRIOR TO CONSTRUCTION.
- DIMENSIONS SHOWN HEREON ARE FOR REFERENCE ONLY.
- DUPLEX PUMP STATION TO BE BY E-ONE SEWER SYSTEM OR OTHER APPROVED EQUAL MANUFACTURER.
- PROVIDE INDEPENDENT DEDICATED ELECTRIC SERVICE TO THE PUMP STATION.

PUMP SIZING AND DISCHARGE ANALYSIS

PARAMETER	VALUE
STATIC HEAD (FEET):	11.40
TOTAL DYNAMIC HEAD (FEET):	21.66
MINIMUM PUMP ELEVATION:	60.0
LENGTH OF FORCE MAIN (FEET):	1,100
NOMINAL DIA. OF FORCE MAIN (INCH):	1.50
ROUGHNESS COEFFICIENT (C):	150
FRICTION LOSS(F/100FT):	0.93
MAXIMUM VELOCITY (FT/ SEC):	1.93

EJONE SPD PUMP PERFORMANCE CURVE



1 SC-740 STORMTECH CHAMBER

SCALE: NO SCALE

4 DUPLEX GRINDER PUMP STATION DETAIL

SCALE: NO SCALE



Date	By	Appr'd By	No.	Submittal/Revision
09/16/23	HD	HD	0	SITE PLAN REVIEW, APP
03/14/24	HD	HD	1	RESPONSE TO COMMENTS

TNC DEVELOPMENT LLC
58 WILLOW STREET
NORWOOD, MA 02062

SITE PLANS
BUILDING EXPANSION
MIXED-USE BUILDING
30-32 WALL STREET, FOXBOROUGH, MA

SITE DETAILS - 2

Designed By: HD	Drawn By: HD	Checked By: -
Issue Date: 09/18/2023	Project No: 12022	Scale:

Drawing No:
C-602